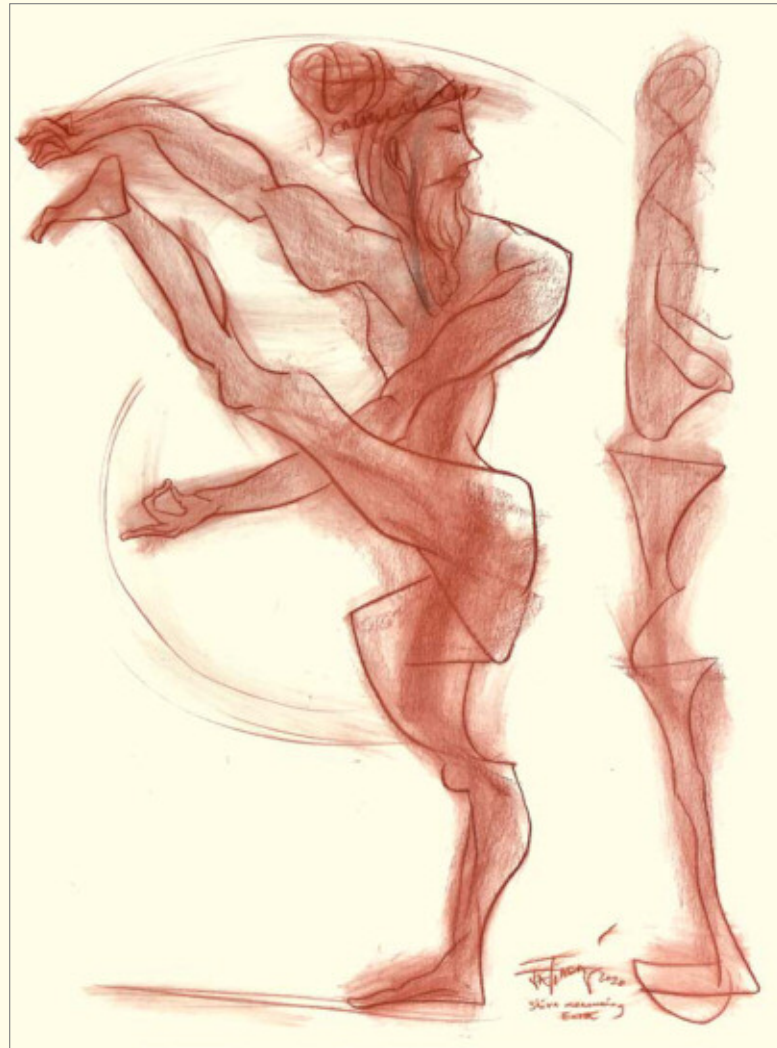


PRAKRUTI PURUSH JATIN DAS



JATIN DAS
PRAKRUTI
PURUSH

Copyright © Jatin Das, 2022
www.jatindas.com
All rights reserved.
The author has asserted his moral rights.

Designed by Siddhartha Das Studio

No part of this publication may be reproduced, transmitted,
or stored in a retrieval system, in any form or by any means,
without permission in writing from Jatin Das.

ISBN: 978-81-902292-5-8

Printed and bound in India by
Archana Advertsing Pvt. Ltd., New Delhi

This book is sold subject to the condition that it shall not, by way of
trade or otherwise, be lent, resold, hired out, or otherwise circulated
without the artist's prior consent in any form of binding or cover
other than that in which it is published.

Cover image: Shiva Measuring Earth, Conté on paper, 30" x 22", 2020

JATIN DAS PRAKRUTI PURUSH

मनोबुद्धयहङ्कारचित्तानि नाहं न च श्रोत्रजिह्वे न च घ्राणनेत्रे।
न च व्योम भूमिर्न तेजो न वायुश्चिदानन्दरूपः शिवोऽहं शिवोऽहम्॥

मैं न तो मन हूँ, न बुद्धि, न अहंकार, न ही चित्त हूँ, मैं न तो कान हूँ, न जीभ, न नासिका, न ही नेत्र हूँ,
मैं न तो आकाश हूँ, न धरती, न अग्नि, न ही वायु हूँ, मैं चैतन्य आनंद रूप हूँ मैं शिव हूँ मैं शिव हूँ
(शिव अर्थात् शुभ, मंगलकारी)

हिंदी अनुवाद

I am not mind, nor intellect, nor ego, nor the reflections of the inner self. Not the ear,
nor the tongue, not the nose, nor the eyes. I am not the ether, nor the earth, nor the fire,
nor the wind. I am that blissful consciousness I am Shiva I am Shiva.

(Shiva means auspicious, beneficial)

English translation



Untitled, Ink on paper, 22" x 15", 2020

Prakruti Purush

Jatin Das

Normally I don't like to talk about my work. Neither at a show, nor in a brochure.

In my early days, I had a little Shiva murti in the house and I used to offer flowers. For no reason. I am not a religious person but I come from a traditional Indian family where puja, prarthana and all the festivals are celebrated.

In the last 60 years, I have visited innumerable temples and sculpture sites in the country. I always get very excited and inspired by the free spirit of Shiva. I believe, any artist worth their salt, must see the Ellora caves. The Monolithic stone carving and the scale of it is just mindboggling. I have done thousands of sketches there. Many of my figurations have the charge of Shiva dancing. I am fascinated by the poetic, metaphoric, philosophical and spiritual aspects of the rhythm, the Brahma rekha figurines.

Recently, I did a large mural at the Adani corporate office. But before I started work on it, I did a lot of drawings, sketches, watercolour, ink drawings, to free my hand, to free my thoughts. So in the two years in Ahmedabad, along with the mural, I also painted on little canvases, on boards, some etchings and on terracotta platters (tavdi), series of works on the same theme.

As I drew and painted, the works took the energy of Shiva Shakti. I began to visualise the series on Shiva, as Prakriti and Purush.

There cannot be any form unless there is Prakruti. It is Ardhanarishwar. I was amazed to see an Ardhanarishwar sculpture even in Egypt! And when one day somebody read out the various forms of Shiva, to my surprise, they befitted the postures that I had painted!

I never pick a theme to draw or paint. I work and it flows and I follow that journey. I turned 80 on the 2nd of December 2021. I have seen many tough times in my life and now I am tired. Yet I continue my journey.



Shiva Shakti
Mural, acrylic on canvas, 26'-3" x 9'-2", 2020
Courtesy: Adani Headquarters, Ahmedabad
(Rajeev Sethi, Scenographer)



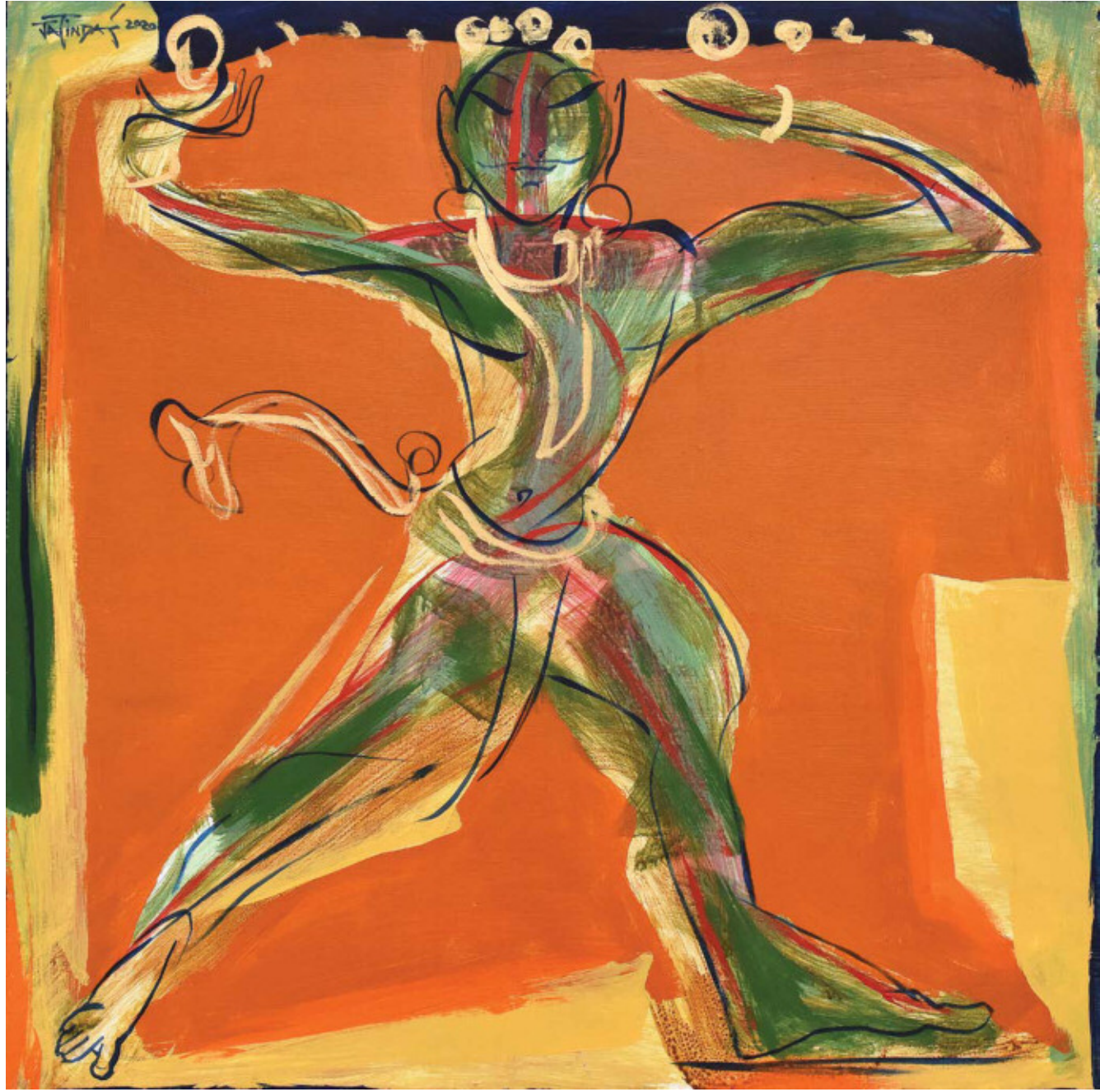
Shiva Shakti
Mural, acrylic on canvas, 26'-3" x 9'-2", 2020
Courtesy: Adani Headquarters, Ahmedabad
(Rajeev Sethi, Scenographer)



Tandava, Arylic on Canvas, Diameter 48", 2022



DhyaanMagna, Arylic on Canvas, Diameter 48", 2022



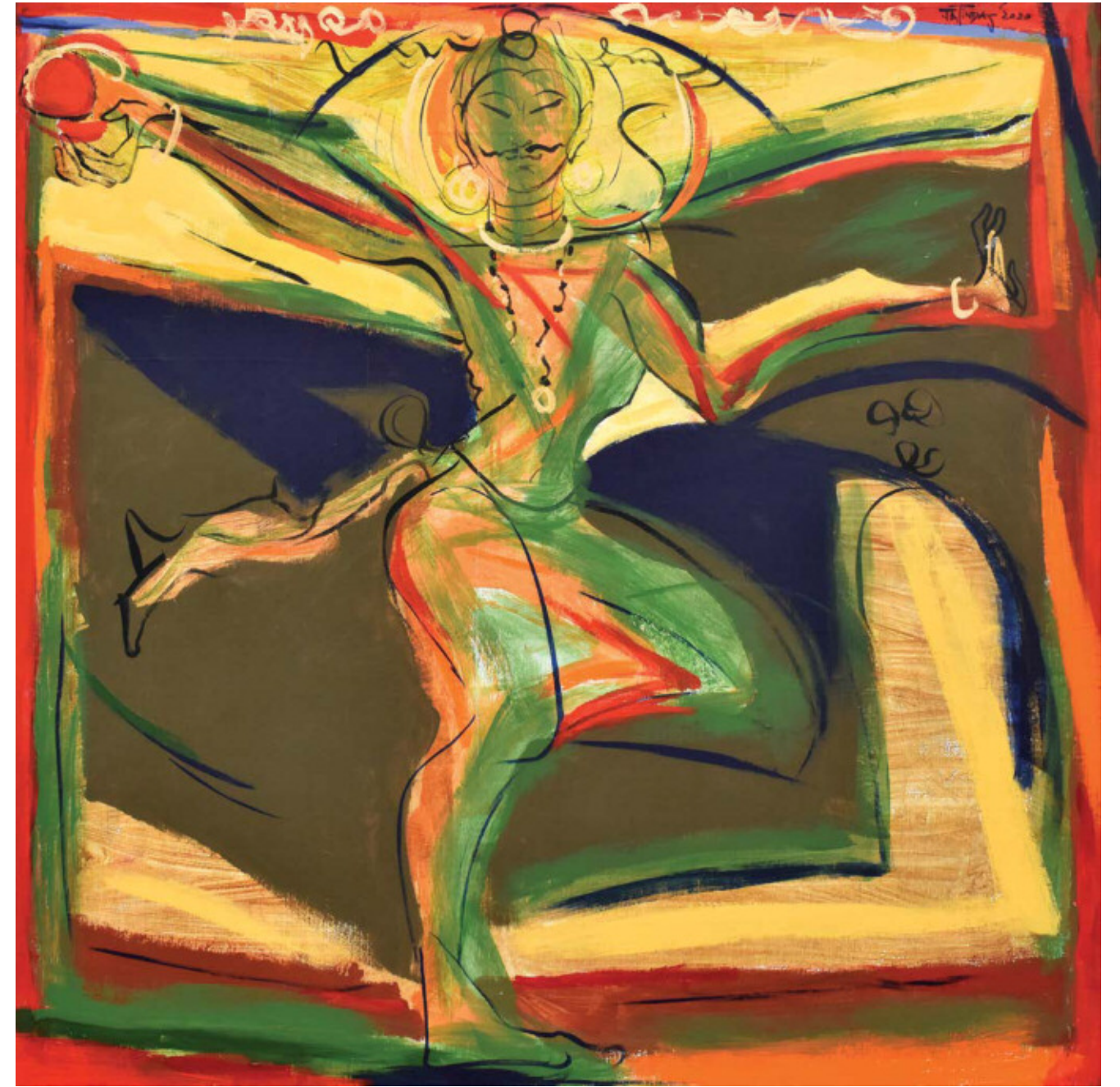
Shivam, Acrylic on board, 30" x 30", 2020



Shiva in Prayer, Acrylic on board, 30" x 30", 2020



Green Shiva, Acrylic on board, 48" x 48", 2020



Universal Shiva, Acrylic on board, 48" x 48", 2020



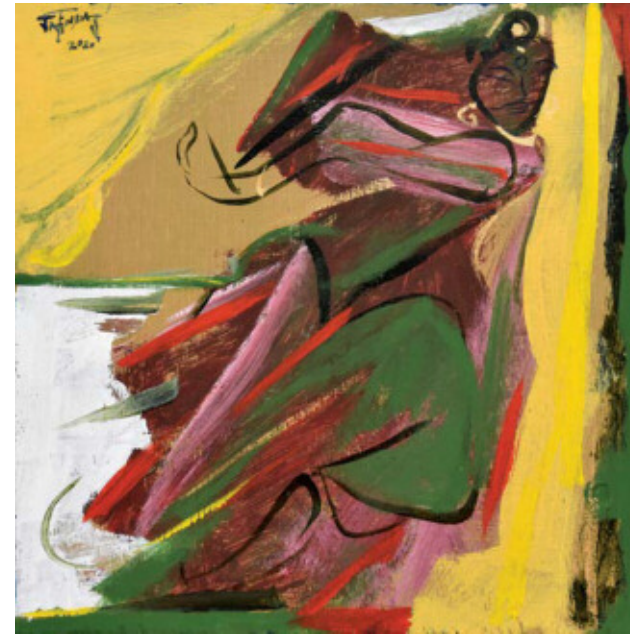
Shiva Tandava, Acrylic on board, 48" x 48", 2020



Shiva Shakti, Acrylic on board, 48" x 48", 2020



JataDhari, Arylic on Canvas, 48" x36", 2021



Someshwara, Acrylic on board, 12" x 12", 2020

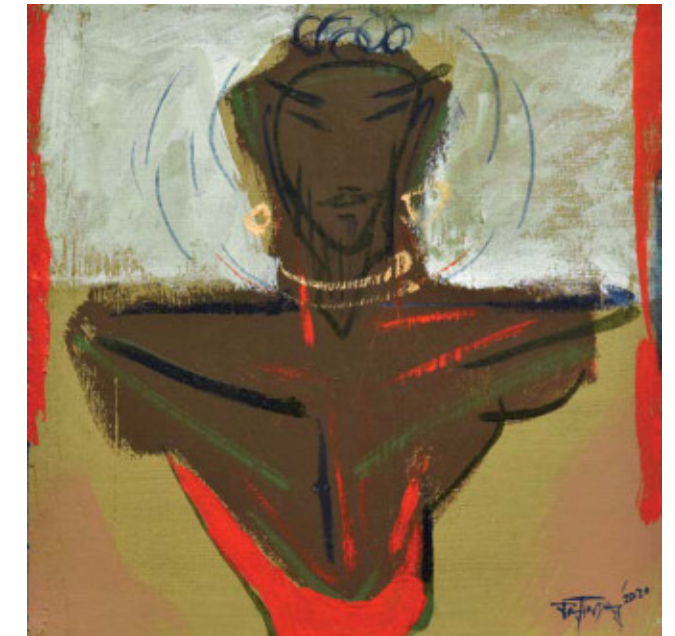
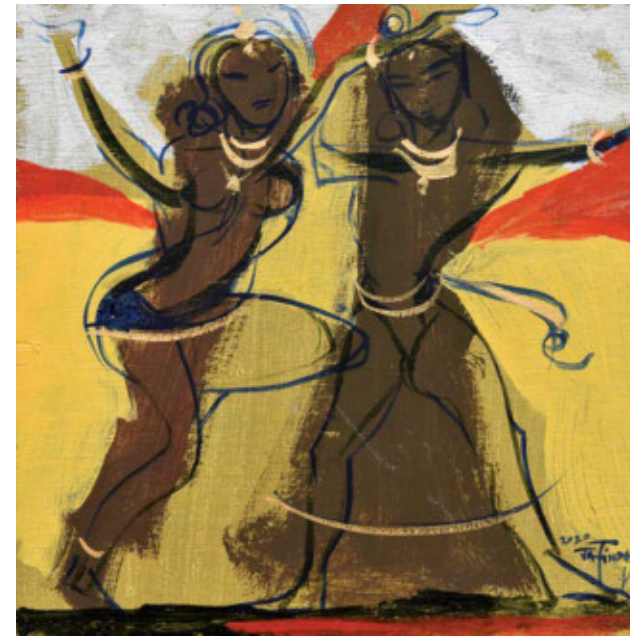
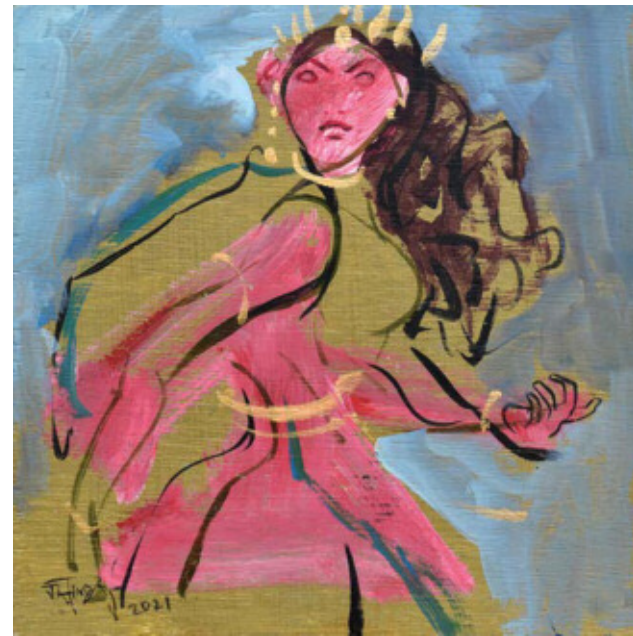
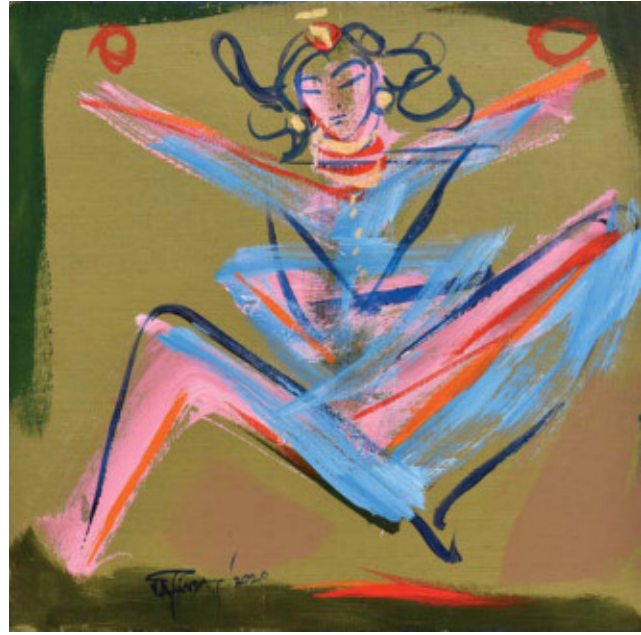


Adi Purush, Acrylic on board, 12" x 12", 2020



Raudra, Acrylic on board, 12" x 12", 2020

Trimurti, Acrylic on board, 12" x 12", 2020

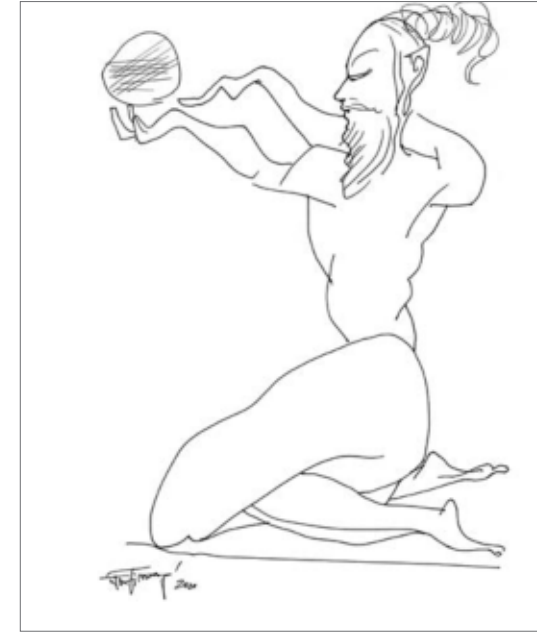


Shakti, Acrylic on board, 12" x 12", 2020
 Bhuteswara, Acrylic on board, 9.25" x 9", 2021

Tandav Shakti, Acrylic on board, 9.5" x 9.5", 2021

Maha Yogi, Acrylic on board, 12" x 12", 2021
 Prakriti Purush, Acrylic on board, 12" x 12", 2020

Amaresh, Acrylic on board, 12" x 12", 2020
 Amrtyu, Acrylic on board, 12" x 12", 2020



Pen & Ink on paper, 12.5" x 10.5", 2020

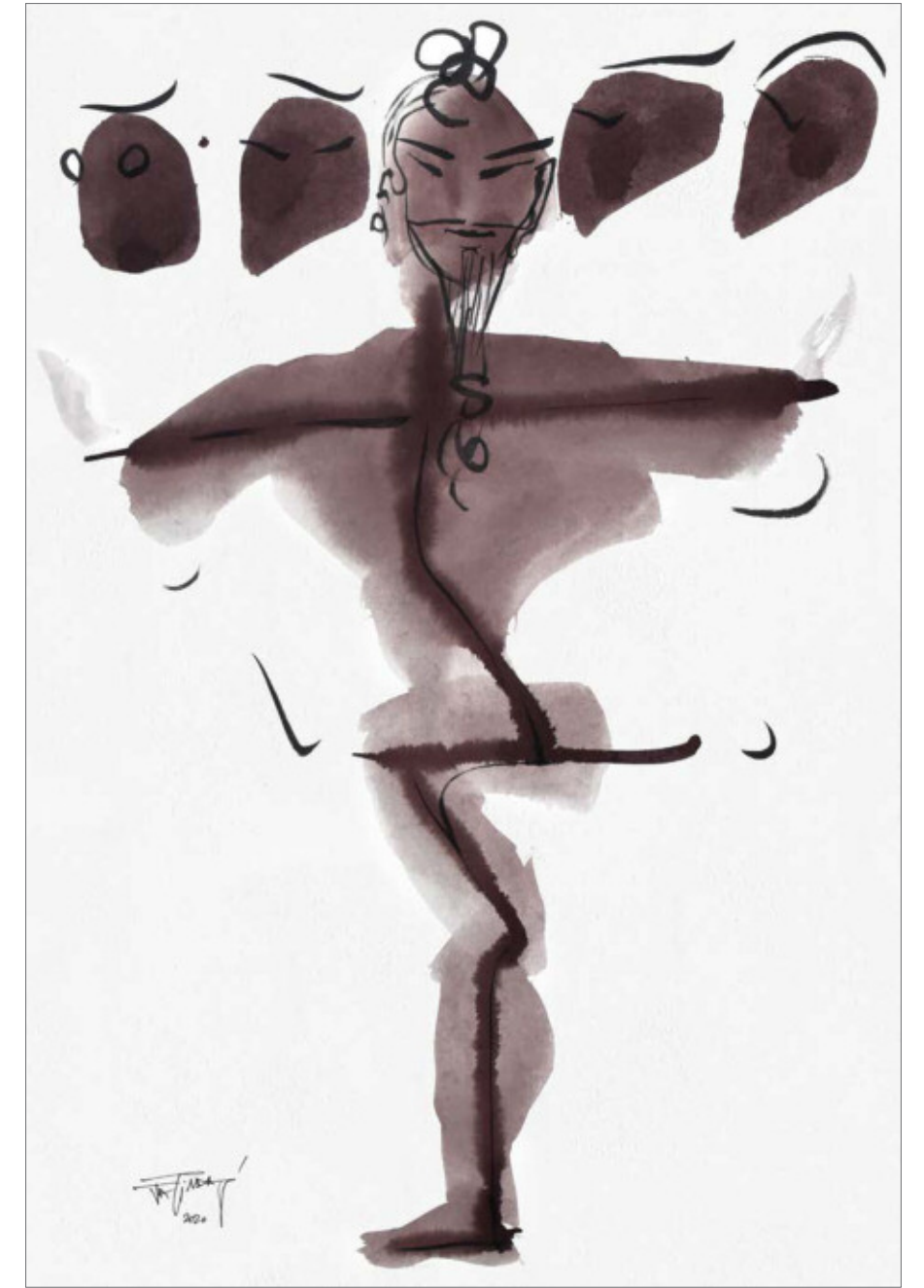
Pen & Ink on paper, 12.5" x 10.5", 2020

Pen & Ink on paper, 12.5" x 10.5", 2020

Pen & Ink on paper, 12.5" x 10.5", 2020



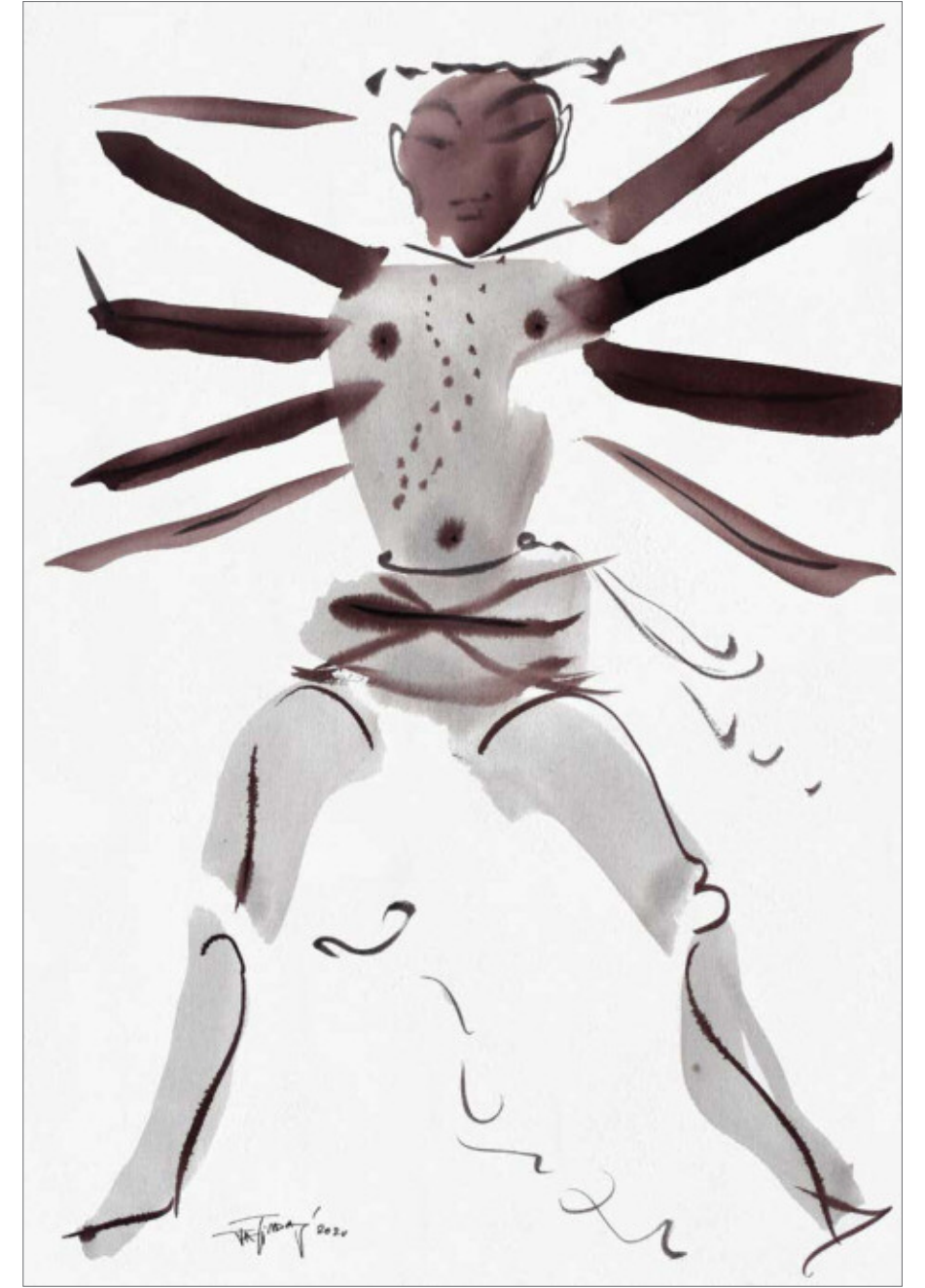
Untitled, Ink on paper, 22" x 15", 2020



Untitled, Ink on paper, 22" x 15", 2020



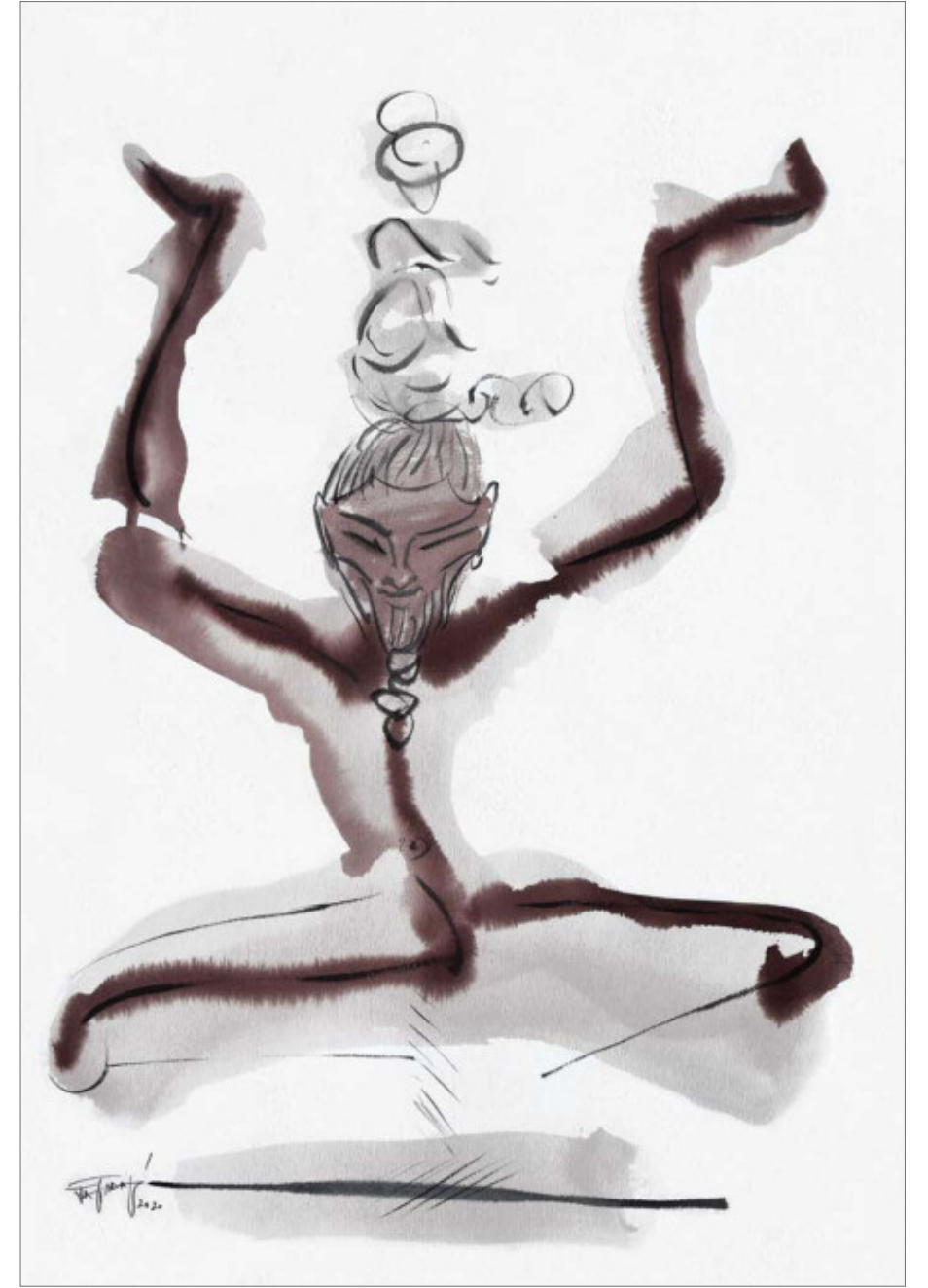
Untitled, Ink on paper, 22" x 14", 2020



Untitled, Ink on paper, 22" x 15", 2020



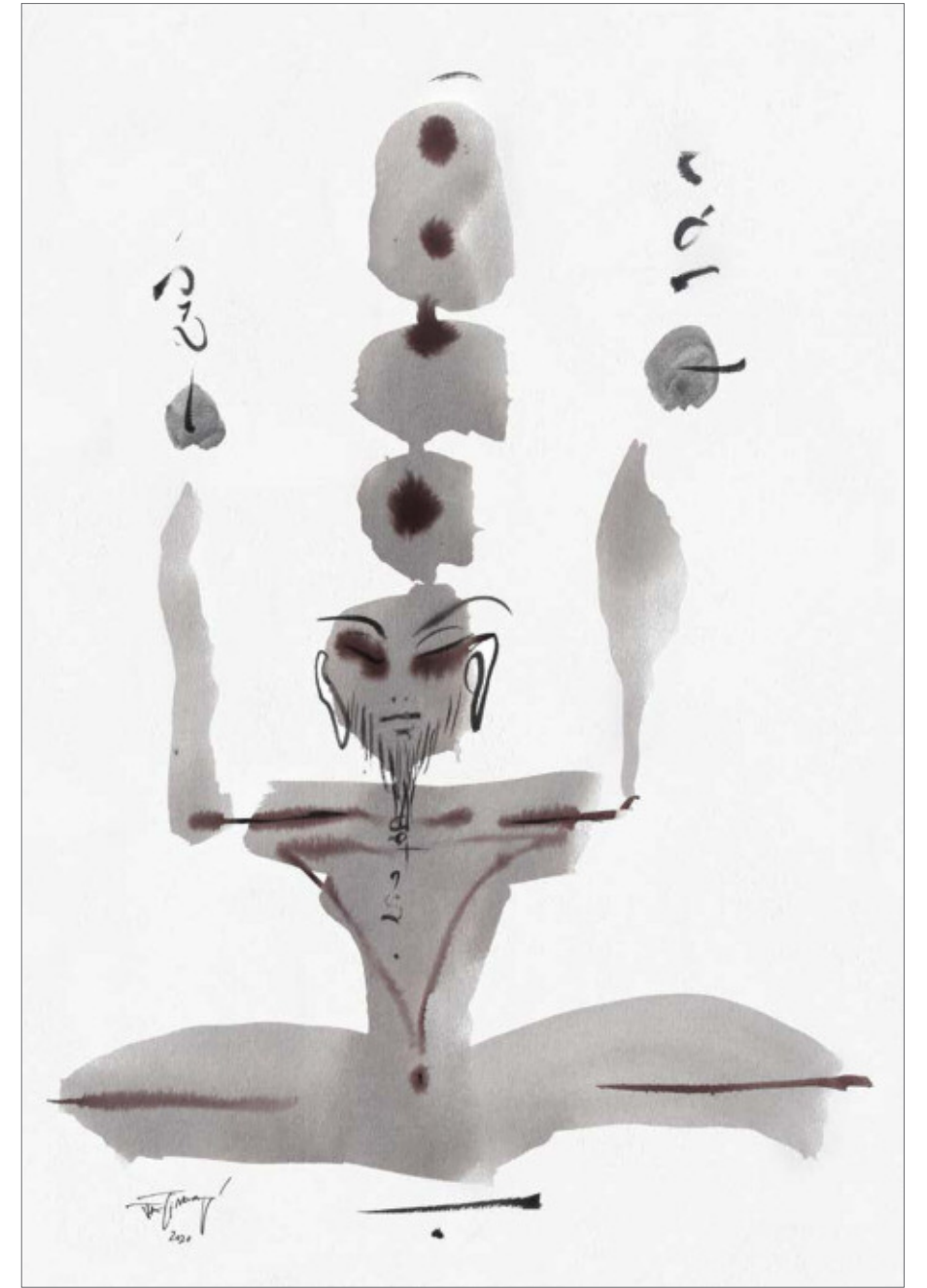
Untitled, Ink on paper, 22" x 15", 2020



Untitled, Ink on paper, 22" x 15", 2020



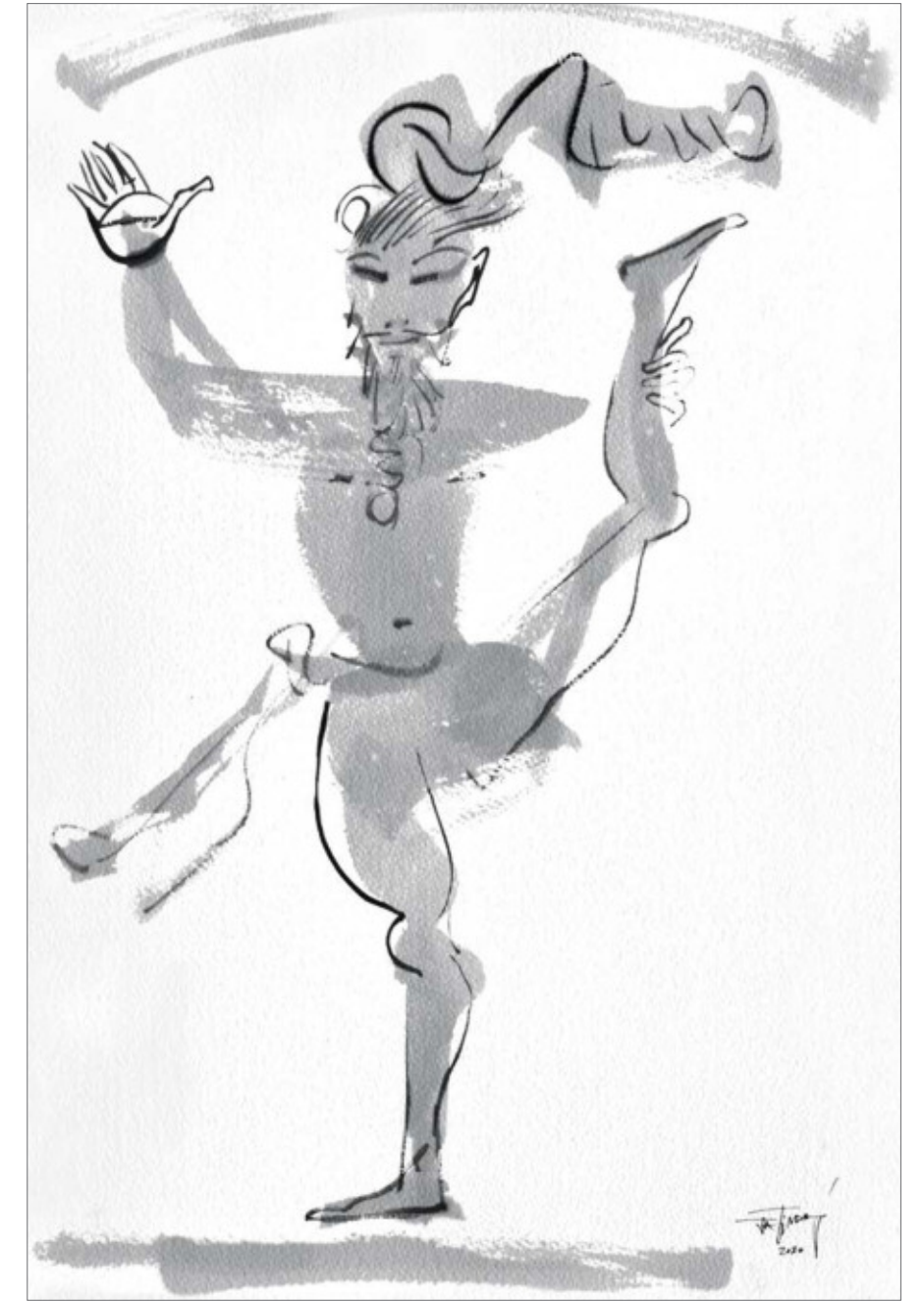
Untitled, Ink on paper, 22" x 15", 2020



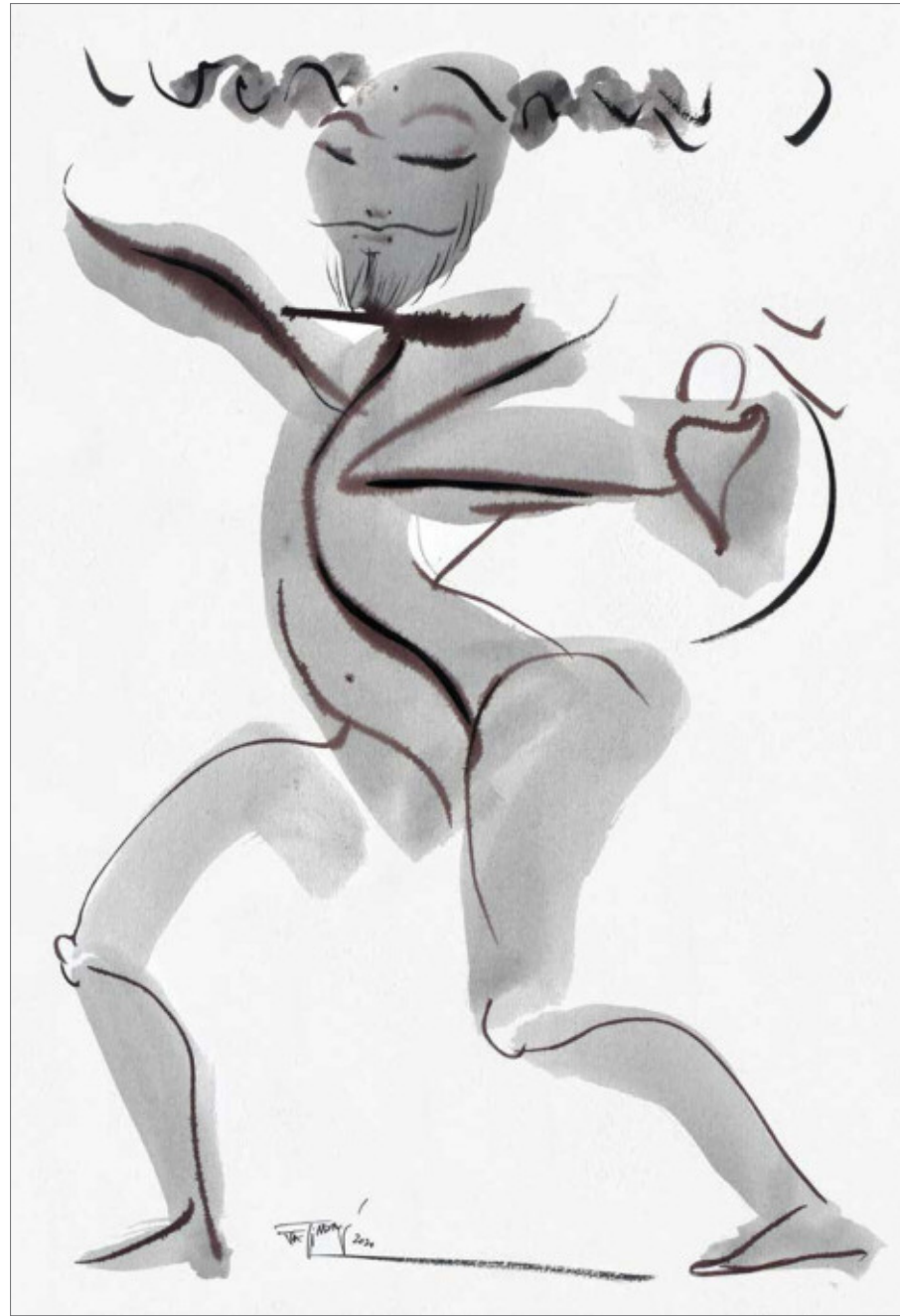
Untitled, Ink on paper, 22" x 15", 2020



Untitled, Ink on paper, 22" x 15", 2020



Untitled, Ink on paper, 22" x 15", 2020



Untitled, Ink on paper, 22" x 15", 2020



Untitled, Ink on paper, 22" x 15", 2020



Untitled, Ink on paper, 22" x 15", 2020



Untitled, Ink on paper, 22" x 15", 2020



Untitled, Ink on paper, 22" x 15", 2020



Untitled, Ink on paper, 22" x 15", 2020



Tandav, Conté on paper, 30" x 22", 2020



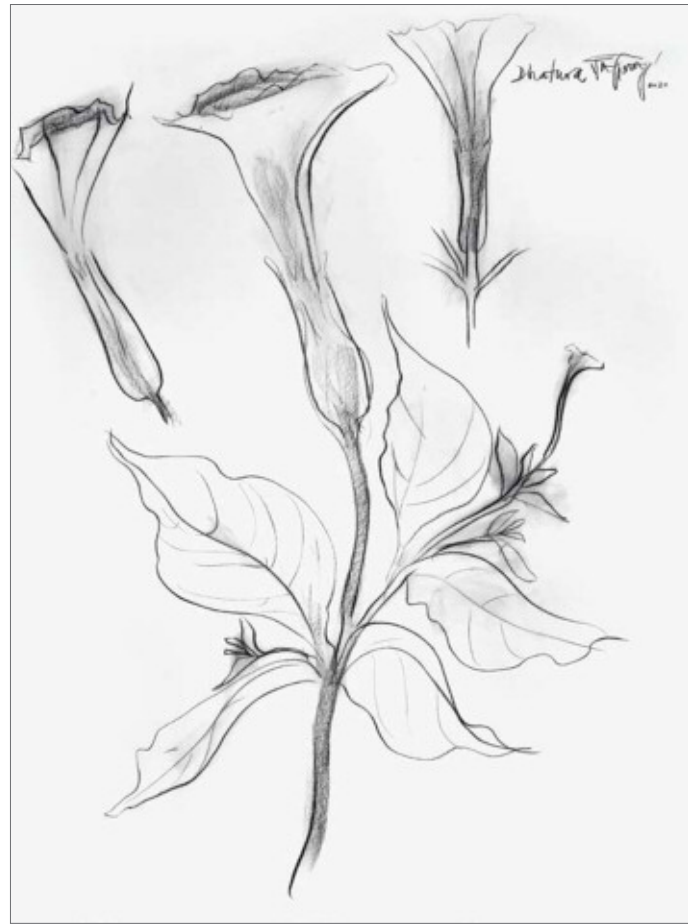
Shiva Tribhangi, Conté on paper, 30" x 22", 2020



Shiva Measuring Earth, Conté on paper, 30" x 22", 2020



Shiva Bulling, Conté on paper, 30" x 22", 2020



Datura, Conté on paper, 30" x 22", 2020



Cosmic Dance, Conté on paper, 30" x 22", 2020



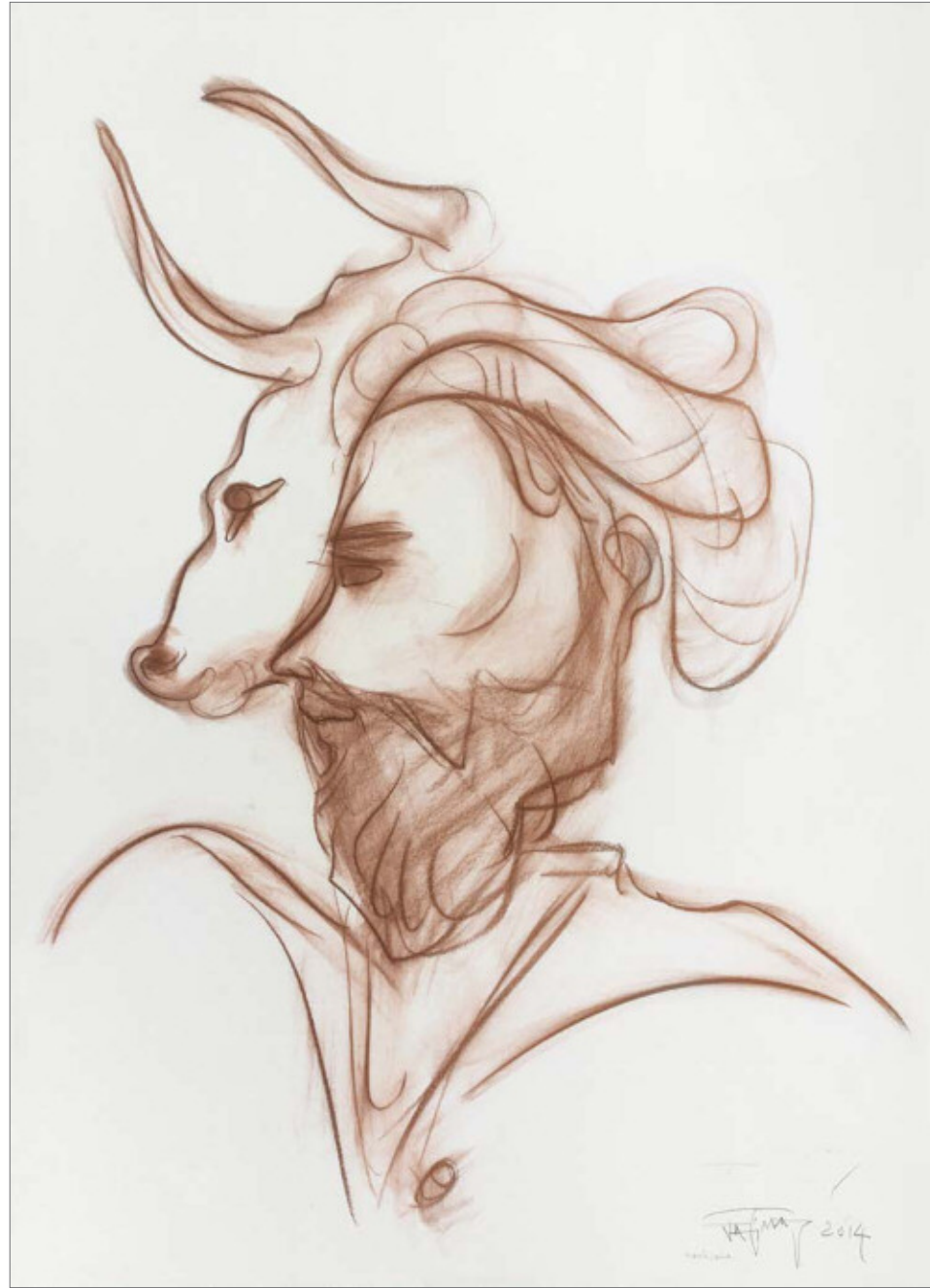
Uthan, Conté on paper, 30" x 22", 2020



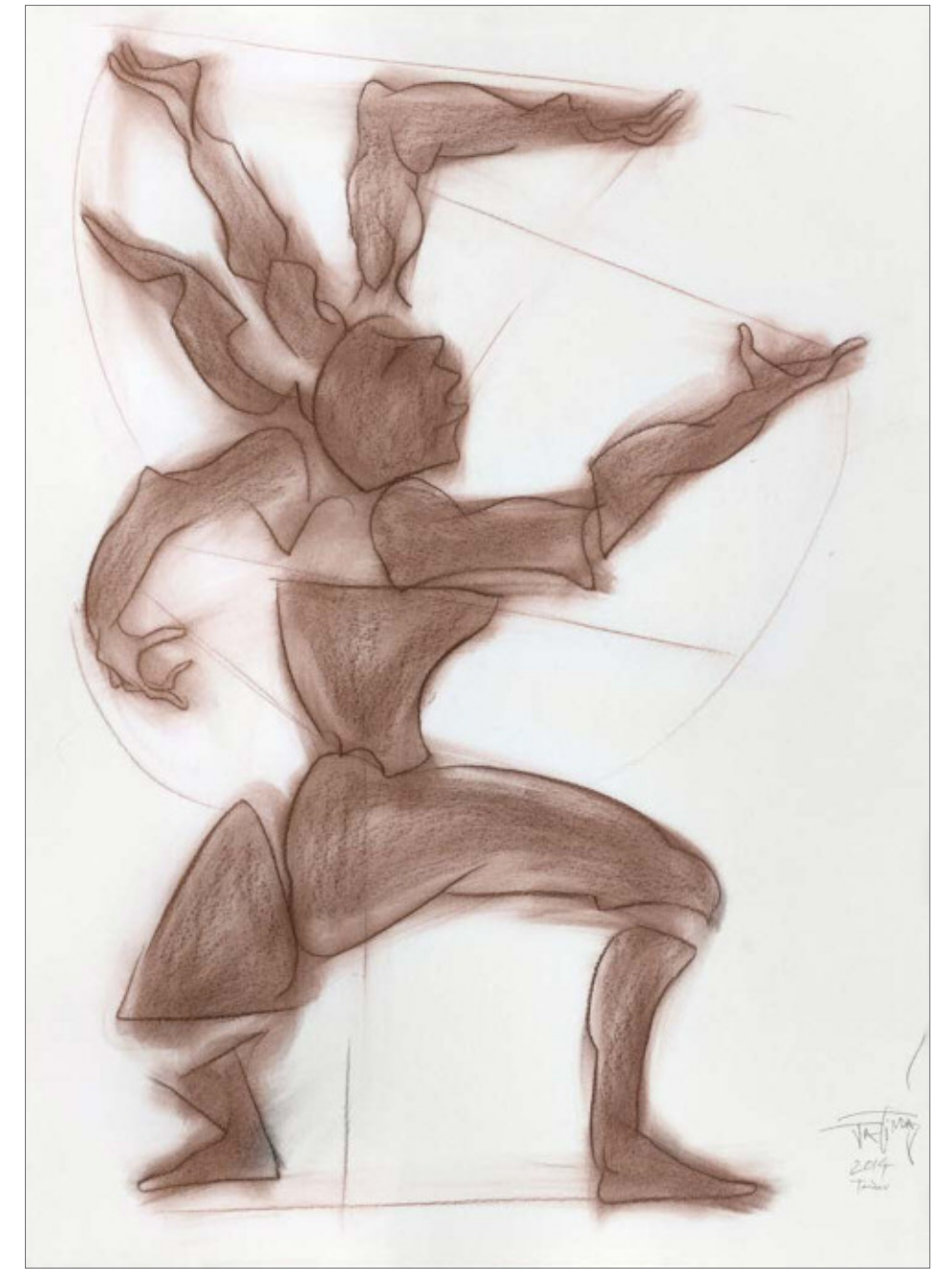
Natraja, Conté on paper, 29" x21", 2014



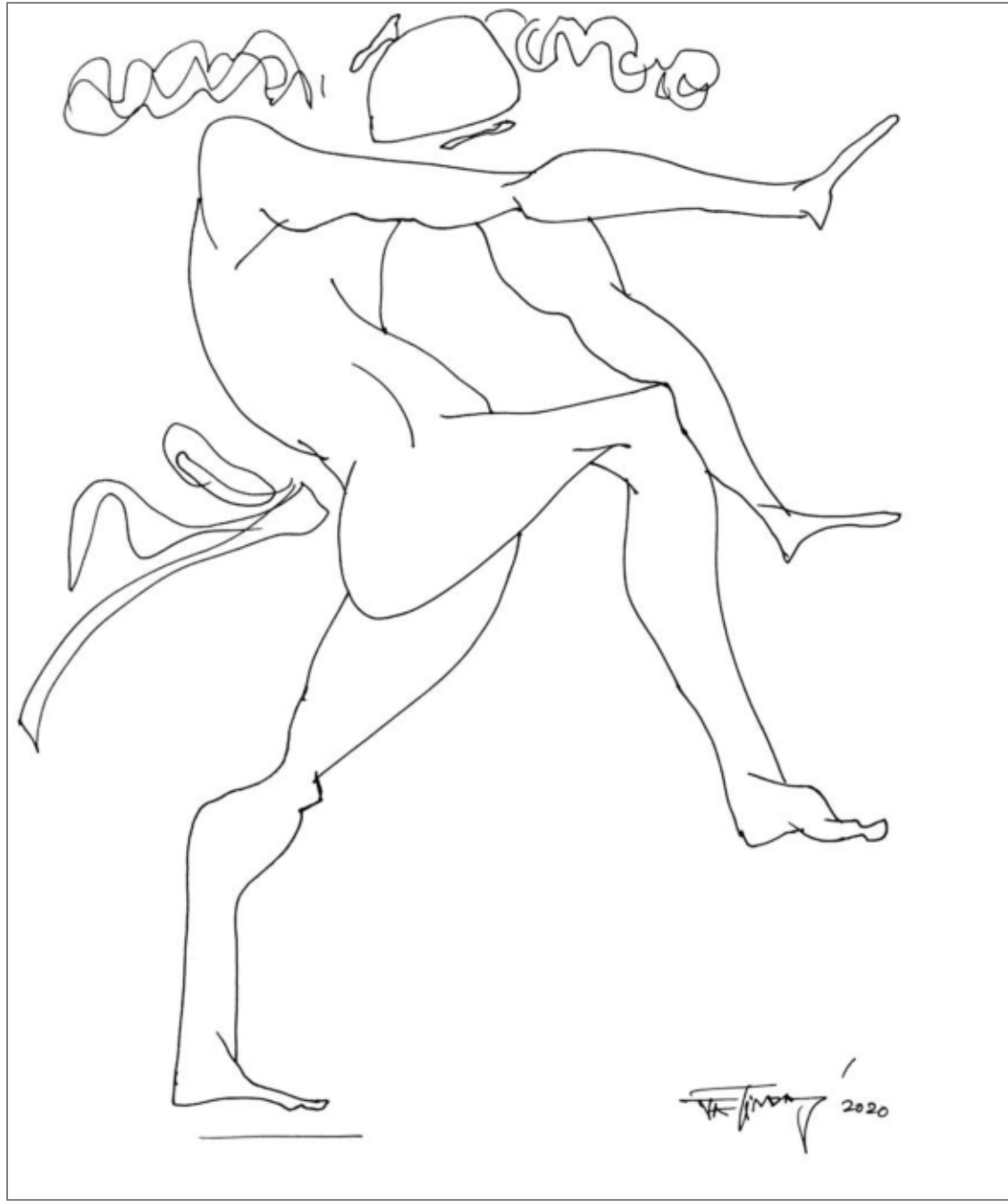
Taranga, Conté on paper, 29" x21", 2014



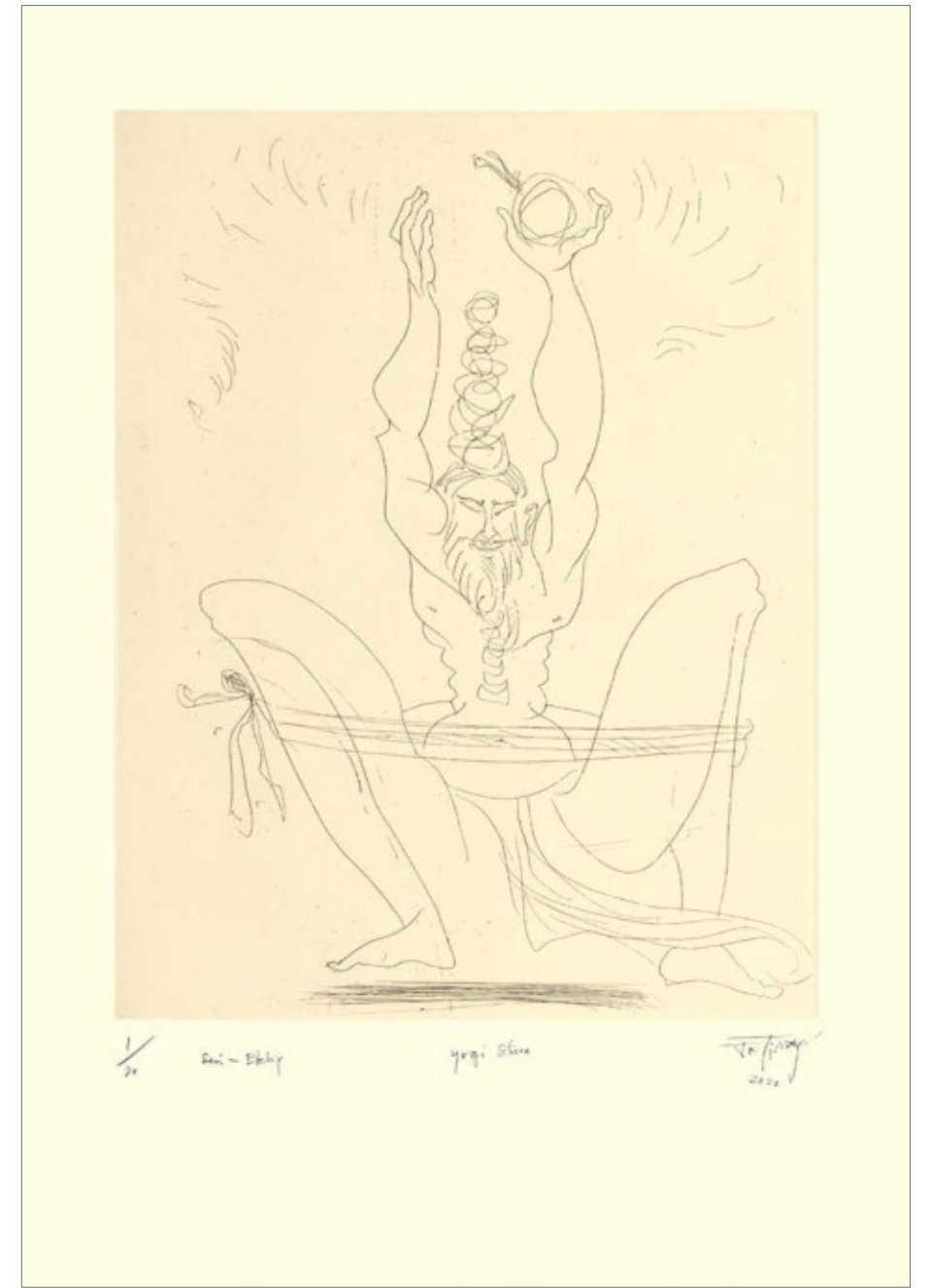
Nandisha, Conté on paper, 29"x21", 2014



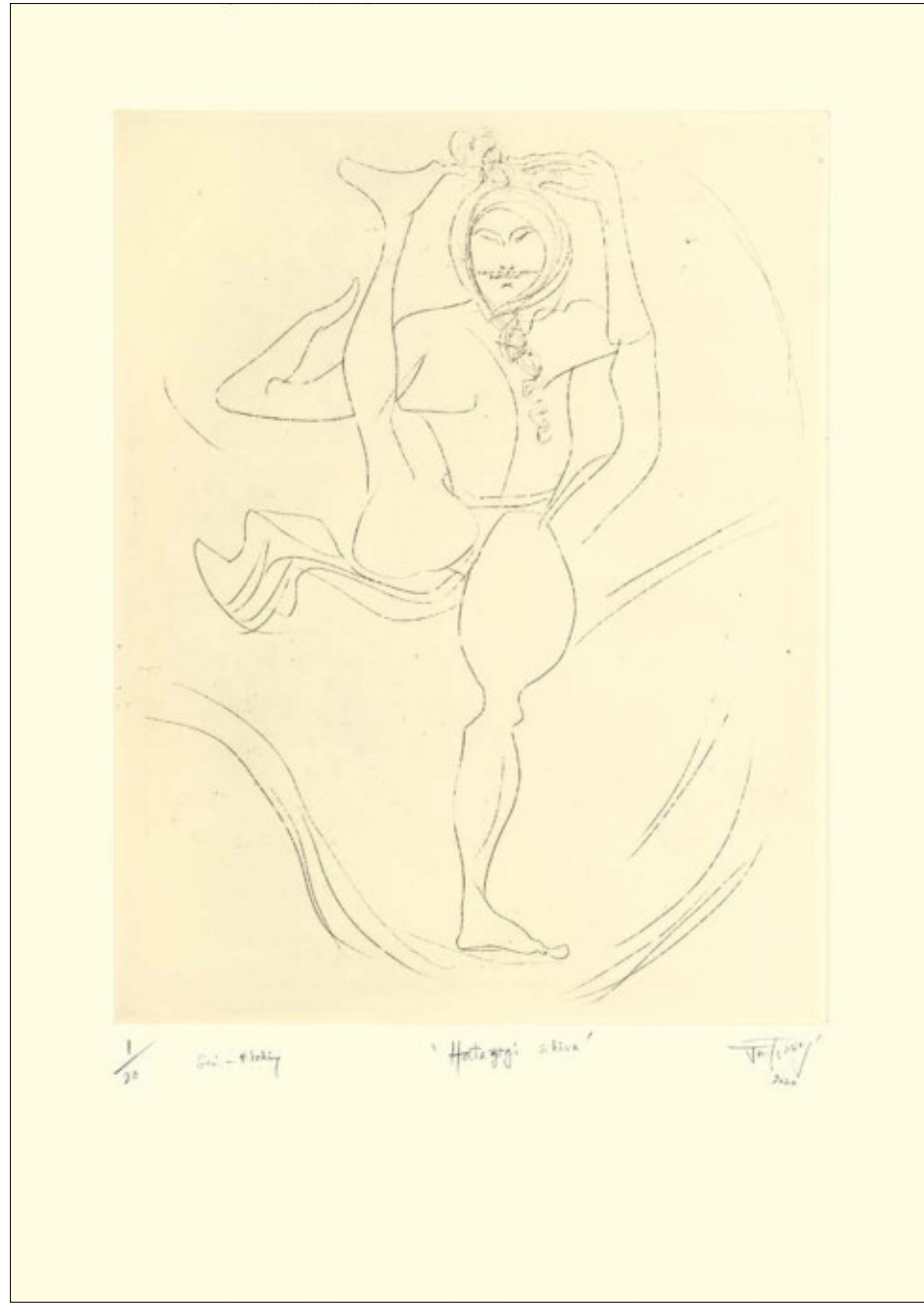
Tandava, Conté on paper, 29"x21", 2014



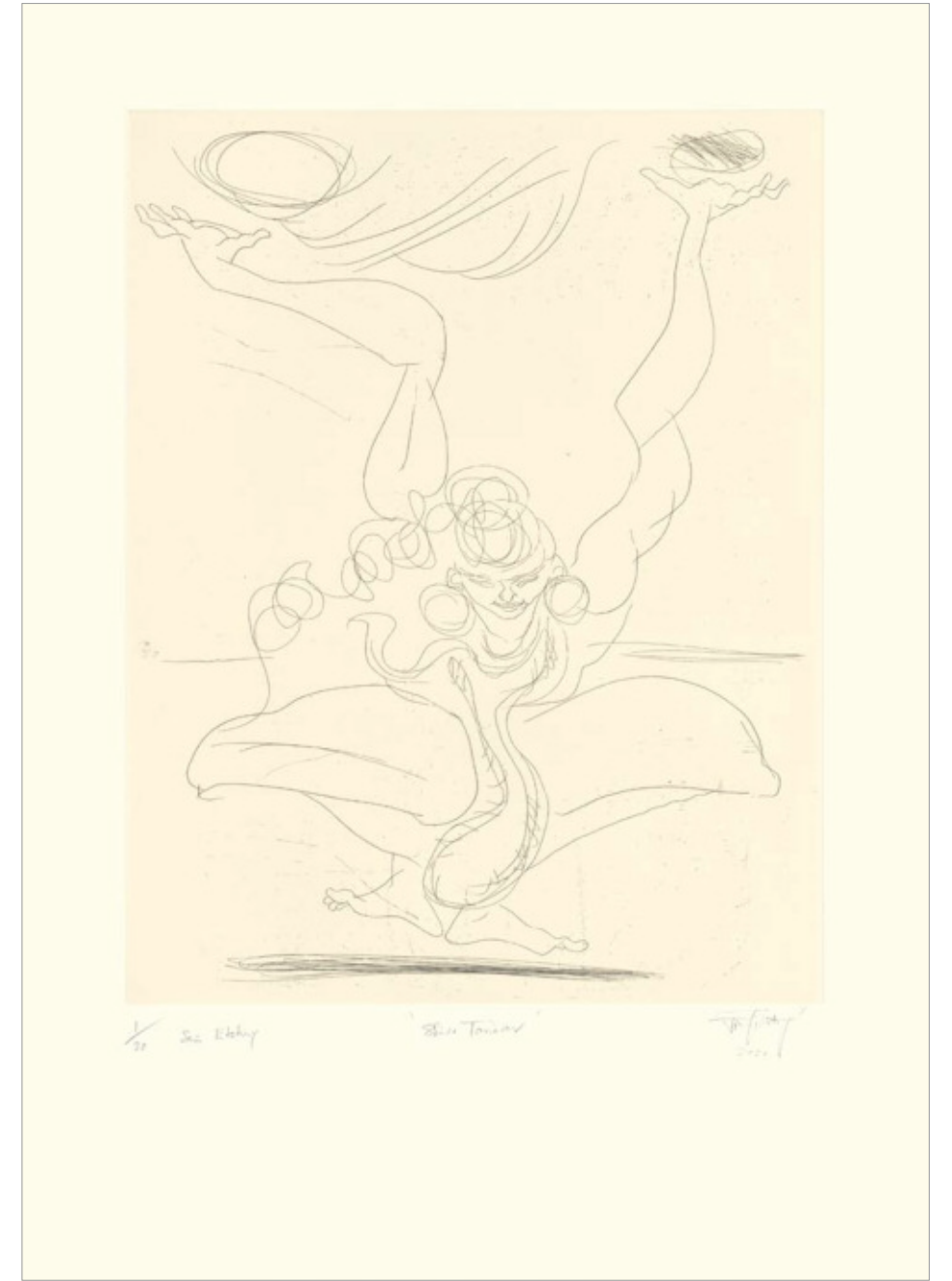
Pen & Ink on paper, 12.5" x 10.5", 2020



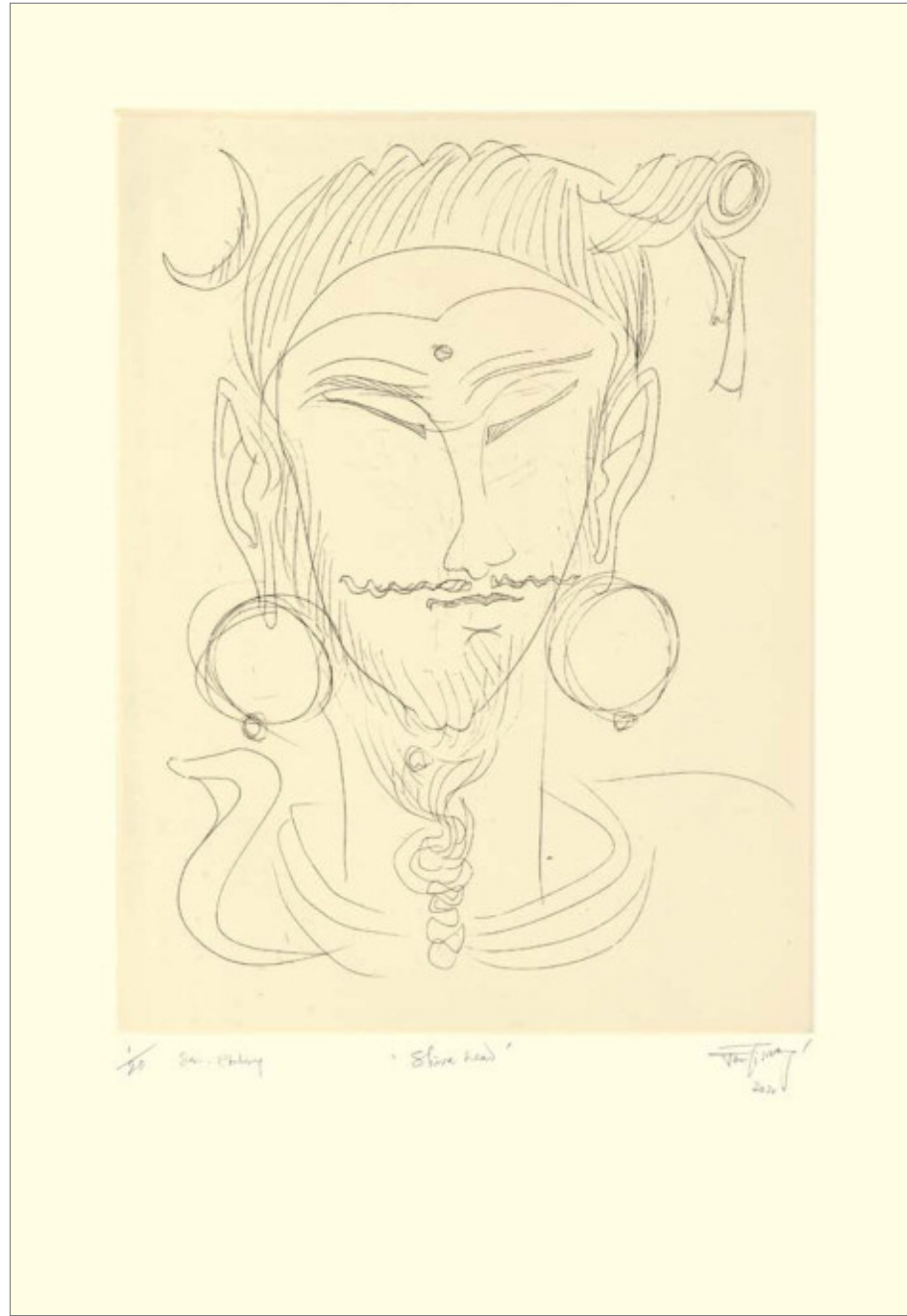
Yogi Shiva, Etching on paper, 28" x 19.5", 2020



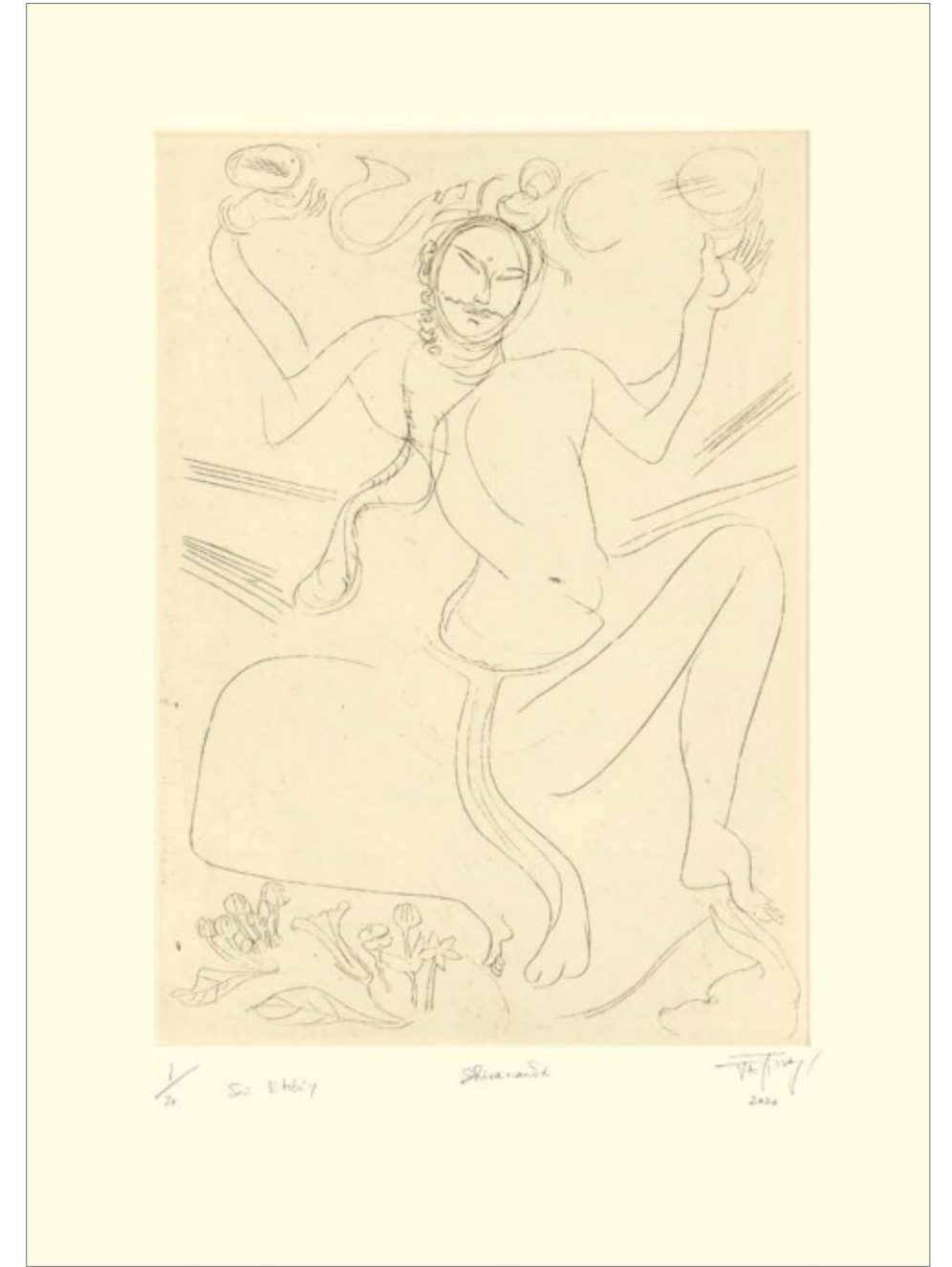
Hatayogi Shiva, Etching on paper, 28" x 19.5", 2020



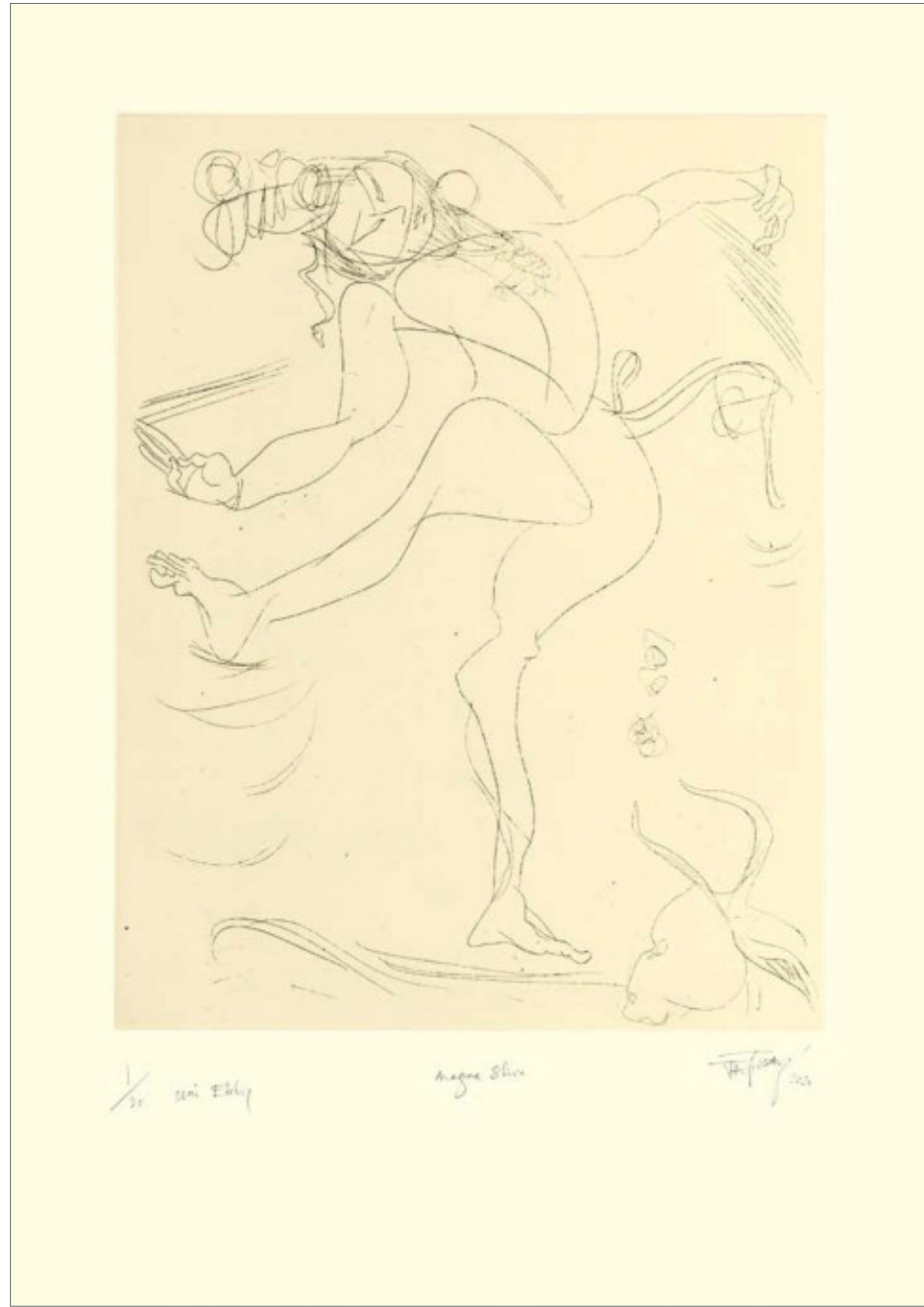
Shiva Tandav, Etching on paper, 28" x 19.5", 2020



Shiva Head, Etching on paper, 28" x 19.5", 2020



Shivananda, Etching on paper, 28" x 19.5", 2020



Magna Shiva, Etching on paper, 28" x 19.5", 2020



Shiva in Cosmic Dance, Etching on paper, 28" x 19.5", 2020



Devi, Arylic on Canvas, 20" diameter, 2021



Shivaya, Arylic on Canvas, 20" diameter, 2021



ShivaShakti, Arylic on Terracotta, 9.5" diameter, 2021
ShivaShakti, Arylic on Terracotta, 9.5" diameter, 2021

ShivaShakti, Arylic on Terracotta, 9.5" diameter, 2022
ShivaShakti, Arylic on Terracotta, 9.5" diameter, 2021

ShivaShakti, Arylic on Terracotta, 9.5" diameter, 2022
ShivaShakti, Arylic on Terracotta, 9.5" diameter, 2021

ShivaShakti, Arylic on Terracotta, 9.5" diameter, 2022
ShivaShakti, Arylic on Terracotta, 9.5" diameter, 2021



ShivaShakti, Arylic on Terracotta, 9.5" diameter, 2022
ShivaShakti, Arylic on Terracotta, 9.5" diameter, 2022

ShivaShakti, Arylic on Terracotta, 9.5" diameter, 2021
ShivaShakti, Arylic on Terracotta, 9.5" diameter, 2021

Bhairavi, Arylic on Canvas, Diameter 20", 2022
ShivaShakti, Arylic on Terracotta, 9.5" diameter, 2021

ShivaShakti, Arylic on Terracotta, 9.5" diameter, 2021



Jatin Das is a painter, poet, sculptor, muralist, print-maker, teacher, cultural expert and Founder Chairman of JD Centre of Art. Born in December 1941 in Mayurbhanj, Odisha in India, Das at 17, went to study at Sir JJ School of Art, Bombay, under Prof. S.B. Palsikar. Since then Das has held over 71 one-man shows. He has participated in numerous exhibitions, biennales and artist camps nationally and internationally including the Venice and Tokyo Biennale. His works are primarily in oil, water colour, ink and conté. He has done several sculptures, graphics, murals and installations and as a printmaker, many etchings, dry point, lithograph and serigraphs. Over the years, he has also designed many postal stamps for the Philately Department. Das is a member of the Poetry Society of India, New Delhi.

In 2012 he was conferred the prestigious Padma Bhushan, one of the highest civilian awards in the country, presented by the President of India. He has also been awarded the D. Litt. by various universities including Rabindra Bharti University in Kolkata. His works have been featured in several public and private collections in India and abroad and have been auctioned by major international auctioneers. His large painting 'The Journey of India: Mohenjo-Daro to Mahatma Gandhi' (7 x 68 ft), is at the Indian Parliament in New Delhi and was inaugurated in 2001 by the then Prime Minister, Shri Atal Bihari Vajpayee.

Jatin Das has been a visiting professor in various universities in India and abroad. In New Delhi, he has been part of the art faculties in Jamia Millia Islamia University, College of Art and the School of Planning and Architecture. He has been a featured speaker at numerous art and architecture institutions, museums and public forums, such as National Institute of Design (Ahmedabad), Victoria Albert Museum (London) and Harvard University (USA) among others; sharing his experiences and knowledge of contemporary and traditional art forms. He has served as an advisor to many government and private cultural bodies. He has donated his works to several charities and social causes, right from the beginning of his career. He actively supported the reconstruction and rehabilitation work after the super cyclone in Odisha in 1999.

Das's commitment to preserve the arts and crafts led him to the dream of setting up the JD Centre of Art. The Centre, which is under construction in Odisha, will house classical, modern, traditional and folk art, all under one roof. His 40 year collection of modern art, antiquities, handicrafts, handlooms and art books will be donated to the Centre. It includes 6,000 Pankhas, one of the largest private collections of hand-fans, some of which have been exhibited in national and international museums.

During the lockdown, Jatin Das has created a series of almost 200 ink paintings about the mass migration of labourers titled "Exodus 2020".

www.jatindas.com

A Line

A line draws itself.
In conte or ink.

A line has no beginning or end.
It has no history.
It just flows.
like blood. Like a river,
That meets the sea.

A drawing is sheer poetry,
And a poem is night,
Void without darkness.

A line divides space,
Not time.
A space can't hold time.

A line begins endlessly,
And gets drawn for no reason.

Jatin Das
2010

www.jatindas.com

ISBN 978-81-902292-5-8



9 788190 229258